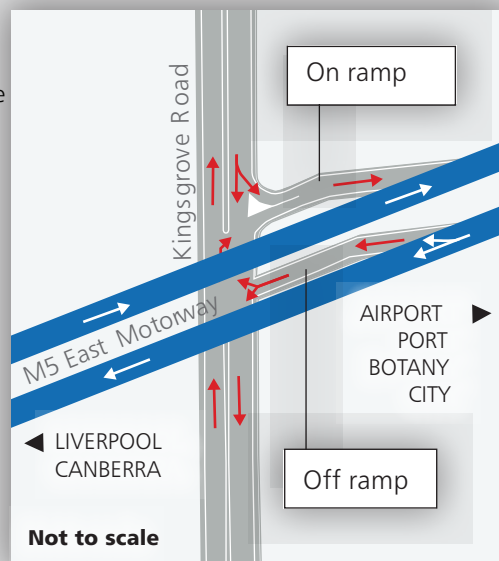


Kingsgrove Road

Entry: Motorists travelling north and south on Kingsgrove Road can enter the M5 East Motorway to travel east from this interchange. There is no entry to travel west.

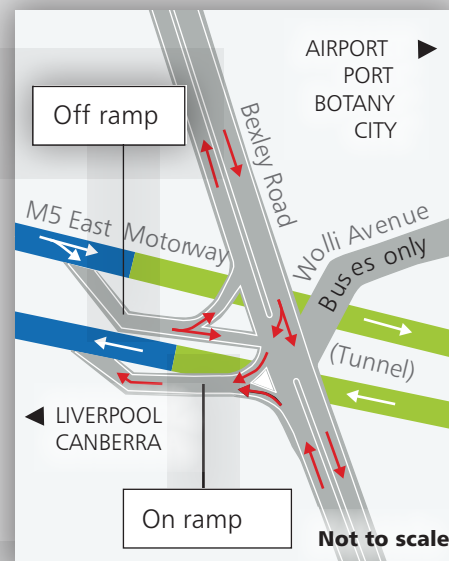
Exit: Motorists travelling west on the motorway can exit at this interchange via a ramp accessed from the centre lane. Motorists are permitted to turn either left or right onto Kingsgrove Road. There is no exit to Kingsgrove Road for vehicles travelling east.



Bexley Road

Entry: Motorists travelling north and south on Bexley Road can enter the M5 East Motorway to travel west from this interchange. There is no entry for motorists to travel east.

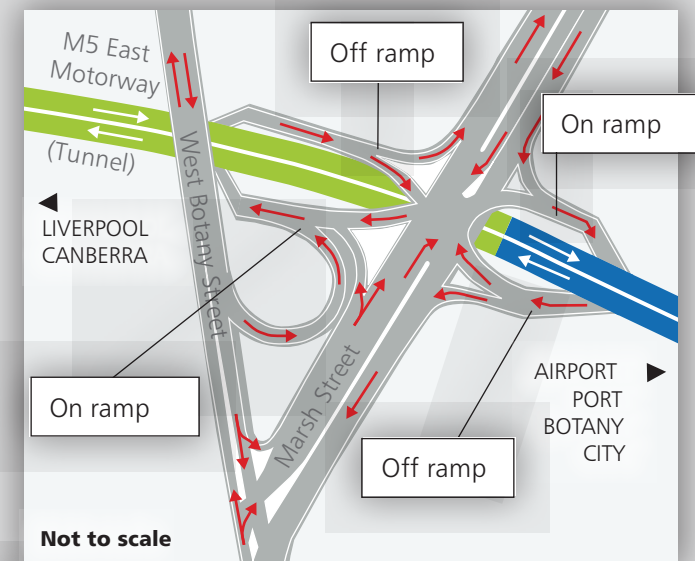
Exit: Motorists travelling east on the motorway can exit at this interchange via a ramp accessed from the centre lane. Motorists are permitted to turn either left or right onto Bexley Road. There is no exit at Bexley Road for vehicles travelling west.



West Botany Street and Marsh Street

Entry: Motorists travelling south along West Botany Street can enter the Motorway tunnel to travel west only. Motorists travelling north can enter via Marsh Street to travel east or west along the motorway. Motorists travelling south along Marsh Street can also enter the Motorway to travel either east or west.

Exit: Motorists travelling east or west on the motorway can exit at this interchange and turn either left or right onto Marsh Street. Motorists who wish to travel south on West Botany Street can exit at this interchange turn on to Marsh Street, and left on to West Botany Street. There is no northbound access to West Botany Street.



Using the M5 East Motorway



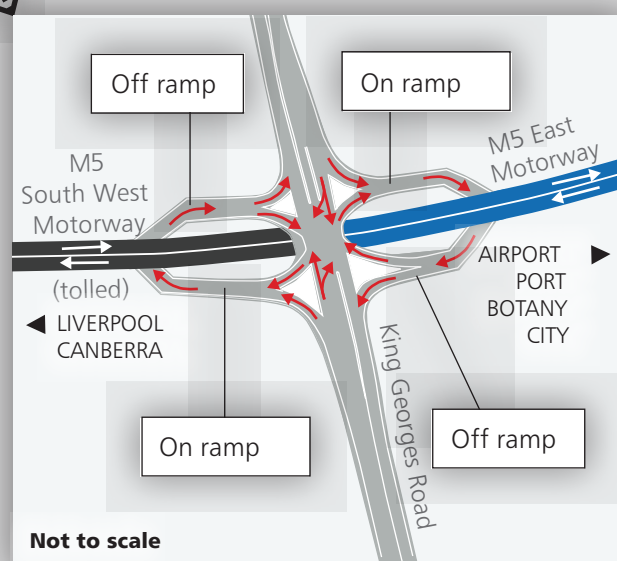
LEGEND

- M5 East Motorway
 - M5 East tunnel
 - Arterial roads
 - Main roads
 - Railways
 - Waterways
 - Recreation area
 - Industrial area
- 0 0.5 1km

King Georges Road

Entry: Motorists travelling north and south on King Georges Road can enter the M5 East Motorway to travel east and the M5 South West Motorway (toll) to travel west from this interchange.

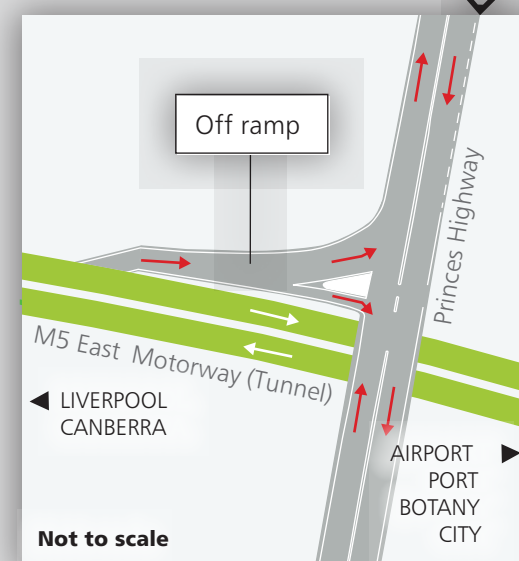
Exit: Motorists travelling east and west on the motorway can exit at this interchange and turn either left or right onto King Georges Road.



Princes Highway

Entry: There is no entry to the M5 East from the Princes Highway.

Exit: Motorists travelling east on the motorway can exit the tunnel to turn either left or right onto the Princes Highway. There is no exit to the Princes Highway for motorists travelling west.



General Holmes Drive

Entry: Motorists travelling south on General Holmes Drive can enter the M5 East Motorway to travel west.

Exit: Motorists travelling east on the motorway can exit onto General Holmes Drive to travel towards the airport, city and Port Botany.

